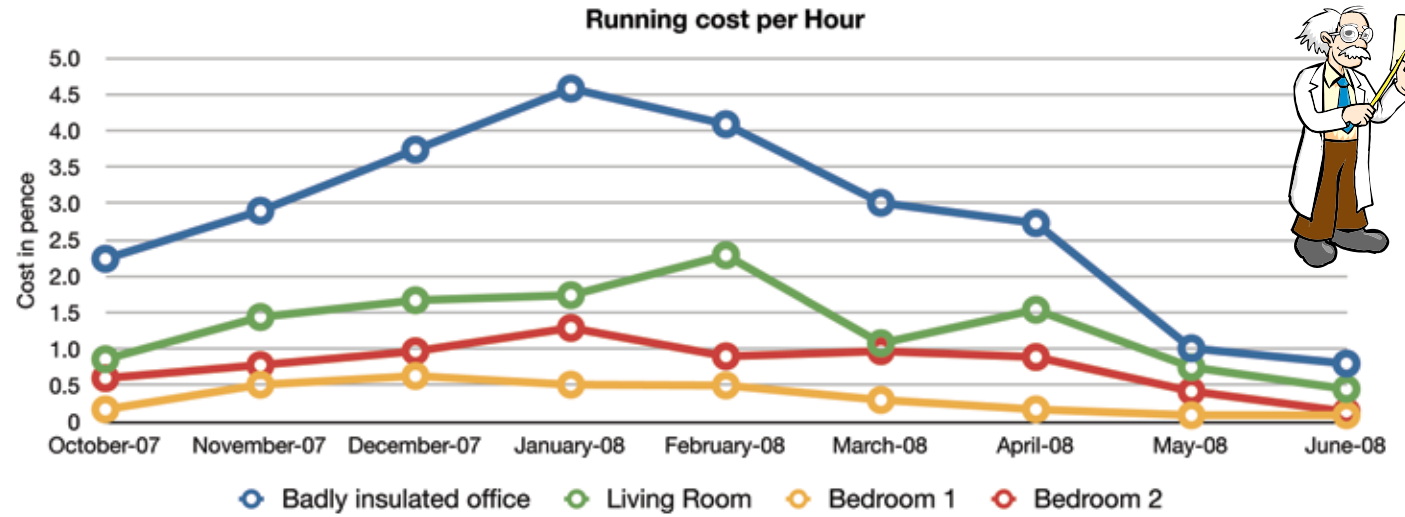


The Test

The Grange Bungalow
2 bedroom plus large living room
and external badly insulated office
(5 rooms), the tenants are in all day.
Temperature setting: Daytime 22
Degrees, Night 18 Degrees

This is my own property as an exact
measured consumption.
The heating is on 365 / 24 hours a
day (never switched off).



Badly insulated office - 1000 watts

Start date	14.09.07	06.10.07	20.10.07	18.11.07	11.12.07	19.01.08	23.02.08	22.03.08	27.04.08	20.05.08	22.06.08	Average
Accumulative Reading Kwh	167	290	384	636	905	1441	1870	2141	2436	2506	2585	2585 units x 0.08p
Period Consumption Kwh	167	123	94	252	269	536	429	271	295	70	79	Days 428
Period in Days	143	22	14	29	24	39	35	30	36	23	33	Cost £206.80
Cost Kwh x 0.08p	£13.36	£9.84	£7.52	£20.16	£21.52	£42.88	£34.32	£21.68	£23.60	£5.60	£6.32	Per Month £14.50
Cost per month	£2.80	£13.42	£16.11	£20.86	£26.90	£32.98	£29.42	£21.68	£19.67	£7.30	£5.75	Per Day £0.48
Cost per day	£0.09	£0.45	£0.54	£0.70	£0.90	£1.10	£0.98	£0.72	£0.66	£0.24	£0.19	Per Hour £0.0201
Cost per hour	£0.0039	£0.0186	£0.0224	£0.0290	£0.0374	£0.0458	£0.0409	£0.0301	£0.0273	£0.0101	£0.0080	

Living room - 1000 watts

Start date	14.09.07	06.10.07	20.10.07	18.11.07	11.12.07	19.01.08	23.02.08	22.03.08	27.04.08	20.05.08	22.06.08	Average
Accumulative Reading Kwh	27	75	111	236	356	560	800	897	1063	1115	1160	1160 units x 0.08p
Period Consumption Kwh	27	48	36	125	120	204	240	97	166	52	45	Days 310
Period in Days	25	22	14	29	24	39	35	30	36	23	33	Cost £92.80
Cost Kwh x 0.08p	£2.16	£3.84	£2.88	£10.00	£9.60	£16.32	£19.20	£7.76	£13.28	£4.16	£3.60	Per Month £9.11
Cost per month	£2.59	£5.24	£6.17	£10.34	£12.00	£12.55	£16.46	£7.76	£11.07	£5.43	£3.27	Per Day £0.30
Cost per day	£0.09	£0.17	£0.21	£0.34	£0.40	£0.42	£0.55	£0.26	£0.37	£0.18	£0.11	Per Hour 0.0125
Cost per hour	0.0036	0.0073	0.0086	0.0144	0.0167	0.0174	0.0229	0.0108	0.0154	0.0075	0.0045	

Bedroom 1 - 1000 watts

Start date	14.09.07	06.10.07	20.10.07	18.11.07	11.12.07	19.01.08	23.02.08	22.03.08	27.04.08	20.05.08	22.06.08	Average
Accumulative Reading Kwh	5	18	25	69	114	174	226	253	271	277	286	286 units x 0.08p
Period Consumption Kwh	5	13	7	44	45	60	52	27	18	6	9	Days 310
Period in Days	25	22	14	29	24	39	35	30	36	23	33	Cost £22.88
Cost Kwh x 0.08p	£0.40	£1.04	£0.56	£3.52	£3.60	£4.80	£4.16	£2.16	£1.44	£0.48	£0.72	Per Month £2.24
Cost per month	£0.48	£1.42	£1.20	£3.64	£4.50	£3.69	£3.57	£2.16	£1.20	£0.63	£0.65	Per Day £0.07
Cost per day	£0.02	£0.05	£0.04	£0.12	£0.15	£0.12	£0.07	£0.04	£0.02	£0.02	£0.02	Per Hour £0.0031
Cost per hour	0.0007	0.0020	0.0017	£0.0051	£0.0063	£0.0051	£0.0050	£0.0030	£0.0017	£0.0009	£0.0009	

Bedroom 2 - 750 watts

Start date	14.09.07	06.10.07	20.10.07	18.11.07	11.12.07	19.01.08	23.02.08	22.03.08	27.04.08	20.05.08	22.06.08	Average
Accumulative Reading Kwh	8	35	60	128	198	349	444	531	627	656	670	670 units x 0.08p
Period Consumption Kwh	8	27	25	68	70	151	95	87	96	29	14	Days 310
Period in Days	25	22	14	29	24	39	35	30	36	23	33	Cost £53.60
Cost Kwh x 0.08p	£0.64	£2.16	£2.00	£5.44	£5.60	£12.08	£7.60	£6.96	£7.68	£2.32	£1.12	Per Month £5.26
Cost per month	£0.77	£2.95	£4.29	£5.63	£7.00	£9.29	£6.51	£6.96	£6.40	£3.03	£1.02	Per Day £0.17
Cost per day	£0.03	£0.10	£0.14	£0.19	£0.23	£0.31	£0.22	£0.23	£0.21	£0.10	£0.03	Per Hour £0.0072
Cost per hour	0.0011	0.0041	£0.0060	£0.0078	£0.0097	£0.0129	£0.0090	£0.0097	£0.0089	£0.0042	£0.0014	

Running costs

Based on standard tariff - 8p (now 9p)

Average cost per hour (per room average) **£0.0107**

Cost per hour All Four Rooms **£0.0429**

Cost All Four Rooms per day **£1.03**

Cost per All Four Rooms per month **£31.10**

All statements made are our "own opinion" based on the real life and published running costs of four test rooms which we measured on our own premises.